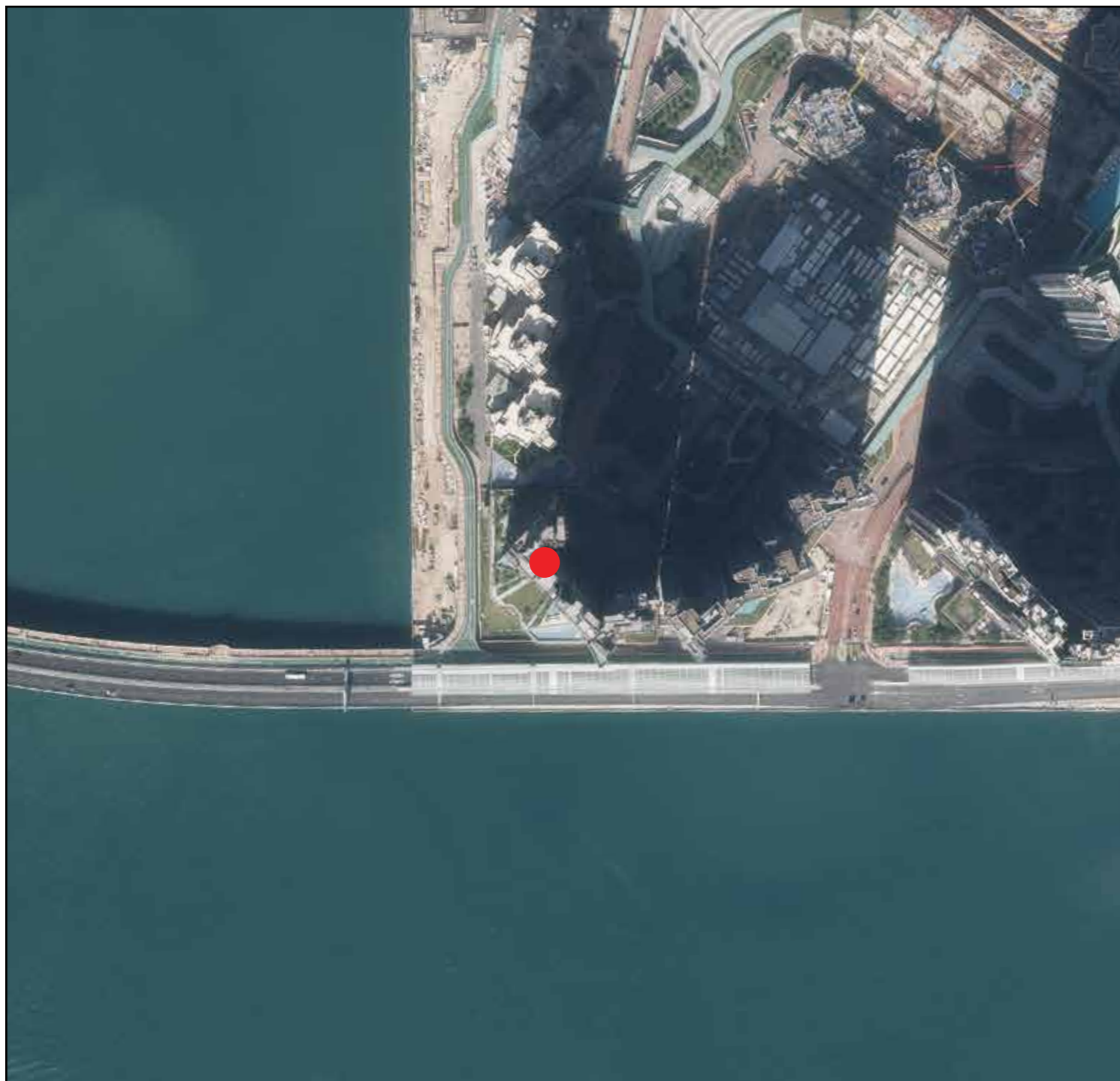


8 AERIAL PHOTOGRAPH OF THE PHASE 期數的鳥瞰照片



● Location of the Phase
期數的位置

Survey and Mapping Office, Lands Department, The Government of HKSAR © Copyright reserved – reproduction by permission only.

香港特別行政區政府地政總署測繪處 © 版權所有，未經許可，不得複製。

Adopted from part of the aerial photograph taken by the Survey and Mapping Office, Lands Department at a flying height of 6,900 feet, photo No. E178478C, date of flight 23rd December 2022.

摘錄自地政總署測繪處在6,900呎的飛行高度拍攝之鳥瞰照片，照片編號E178478C，飛行日期為2022年12月23日。

Notes:

1. Copy of the aerial photograph of the Phase is available for free inspection at the sales office of the Phase during opening hours.
2. The aerial photograph may show more than the area required under the Residential Properties (First-hand Sales) Ordinance due to technical reason that the boundary of the Phase is irregular.
3. The vendor advises prospective purchasers to conduct on-site visit for a better understanding of the Phase, its surrounding environment and the public facilities nearby.

附註：

1. 期數的鳥瞰照片之副本可於期數的售樓處開放時間內免費查閱。
2. 由於期數的邊界不規則的技術原因，此照片所顯示的範圍可能超過《一手住宅物業銷售條例》所規定的範圍。
3. 賣方建議準買家到有關期數作實地考察，以對該期數、其周邊地區環境及附近的公共設施有較佳了解。